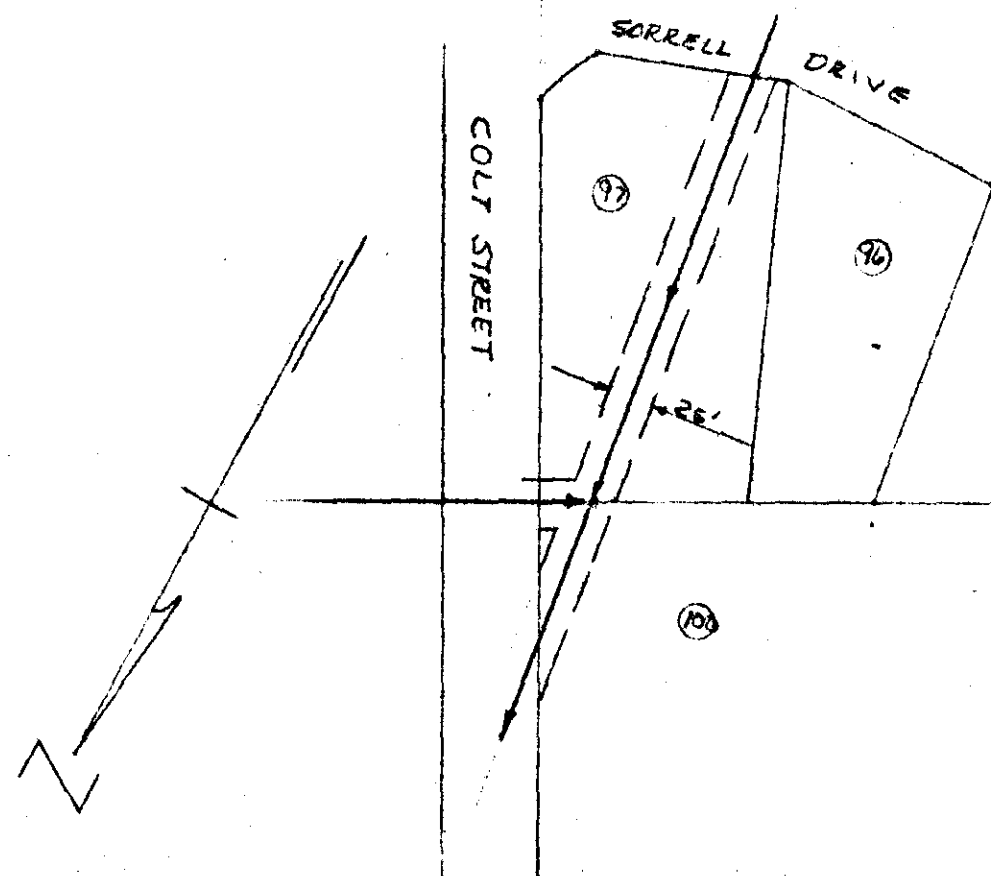
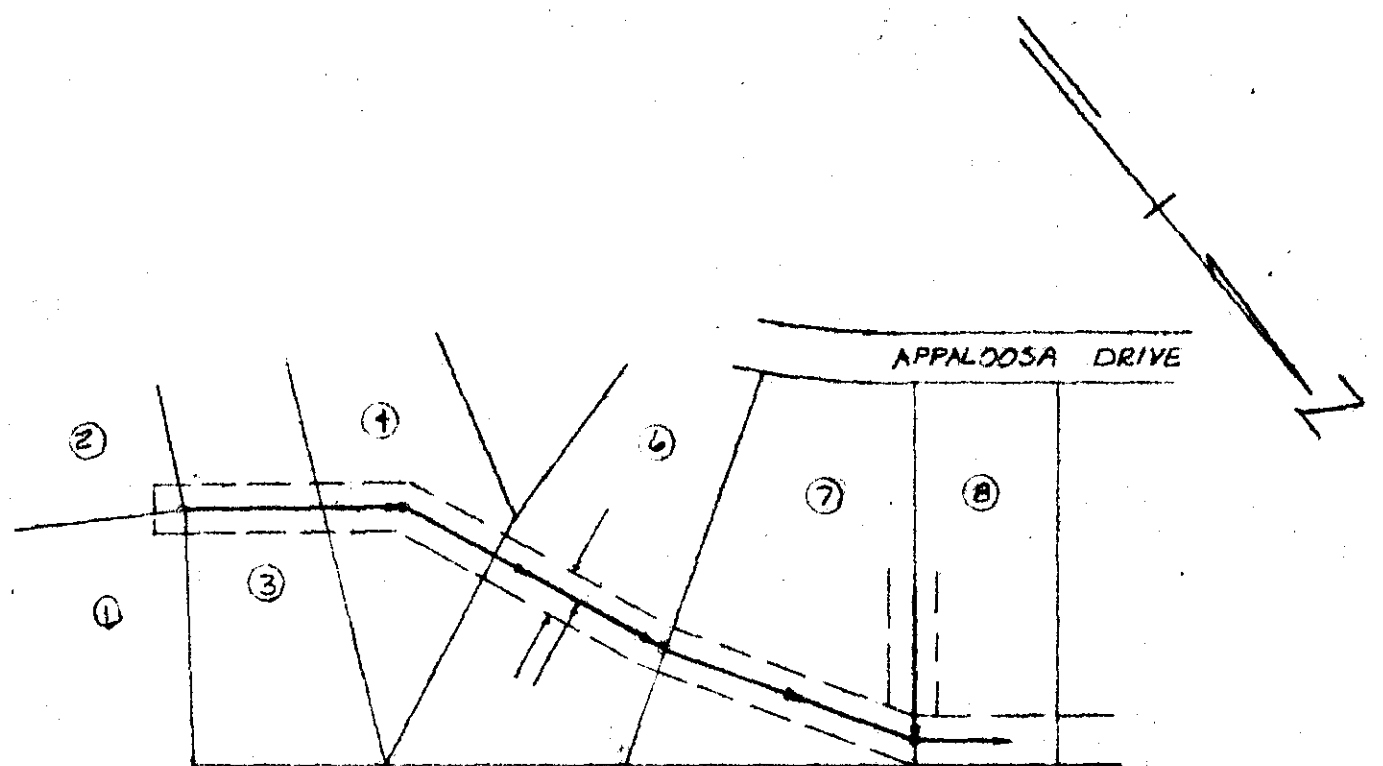


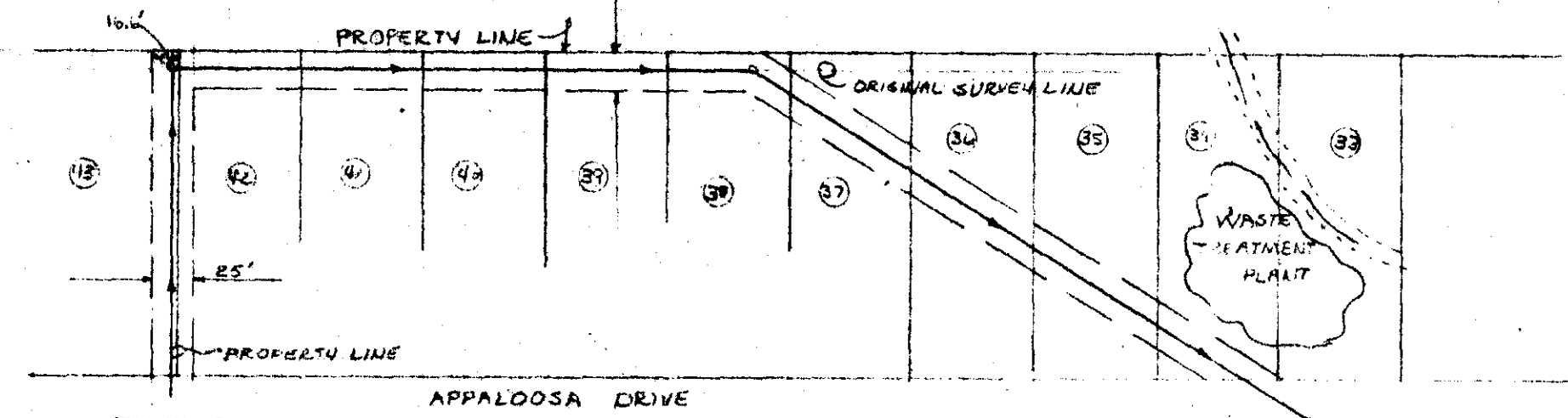
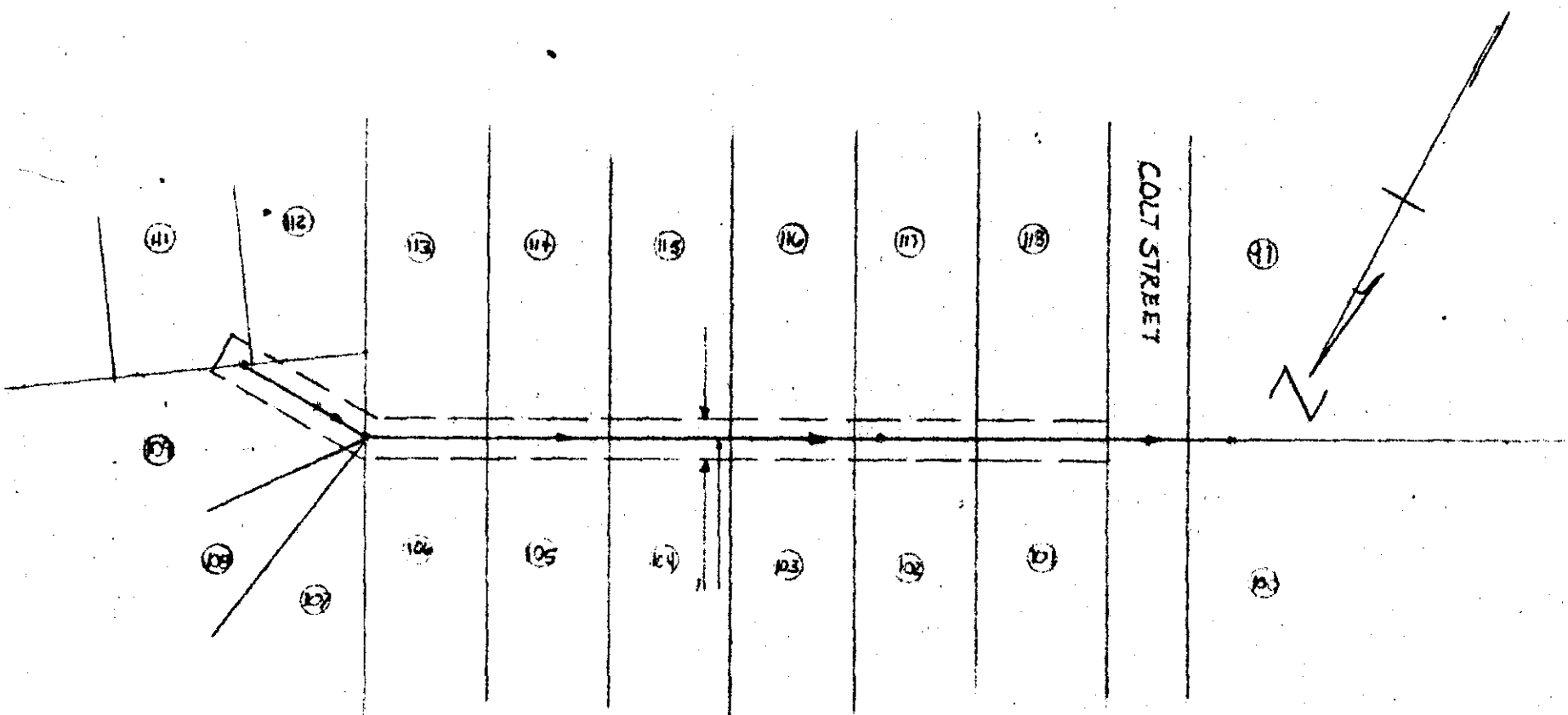
SAUNITARY SEWER RIGHT OF WAY
FOR
MUSTANG VILLAGE
NEAR GREENVILLE, S.C.
AUG. 3, 1972 SCALE 1" = 100'

DRAWN FROM SEWER PLAN AND PROFILES

AUG 7 1972
3642



FILED
GREENVILLE CO. S. C.
AUG 7 10 21 AM '72
ELIZABETH RIDDLE
R.M.C.



BY: CAMPBELL & CLARKSON
SURVEYORS, INC.
H.C. Clarkson
S.C.R.L.S. No. 2589

42-14
3.00